



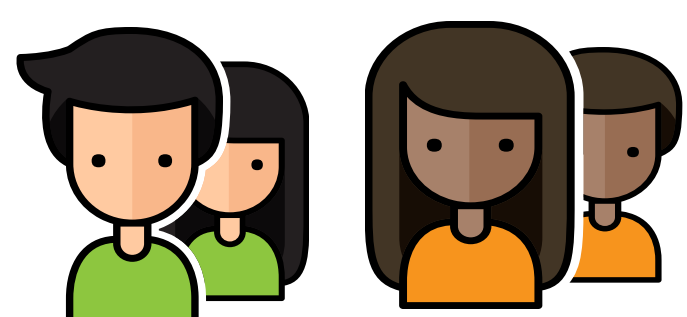
MAINE TOWNSHIP HIGH SCHOOL DISTRICT 207

D 2 0 7

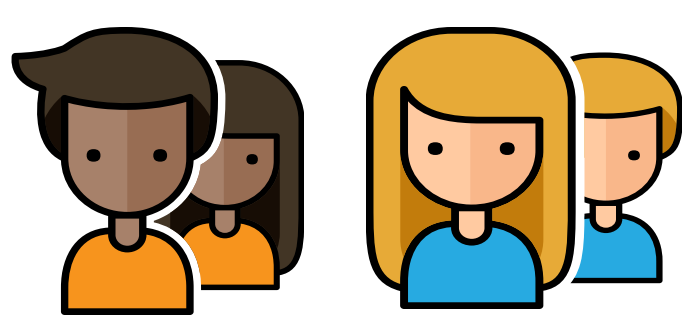
Our Purpose: Together we educate students to be informed, inquisitive, responsible, creative, and reasoning individuals.

D 2 0 7

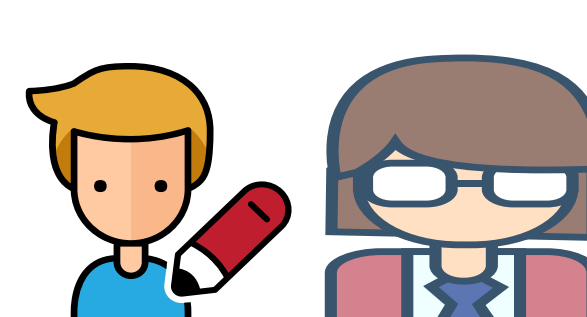
The RIGHT Place for YOU!



6,350
Awesome
Students



42% Student
Racial/Ethnic
Diversity



12.4 Students
to Certified
Staff Ratio



1:1 Computing
Program with Google
Chromebooks



81.5% of Teachers
with Master's
Degree or Above



9% Low Income
Students



ACT/SAT average
scores consistently
higher than state
average



58% of all
expenditures are
for Instruction costs



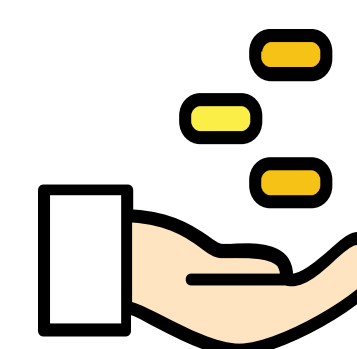
92.2% Teacher
Retention Rate



\$19,219
Operating
Expenditure per
Pupil



Over 200 clubs,
sports and
activities offered to
students



Starting Salaries
(BA/1): \$57,431
(MA/1): \$61,829



Top Salaries
(MA/26): \$118,778
(MA+64/30): \$136,804



Outstanding
Induction Program
and Embedded
Professional
Development



Excellence in
Education Blue
Ribbon Award US
Dept of Education



Apply online at:

www.generalasp.com/D207/onlineapp

District Website: www.maine207.org