



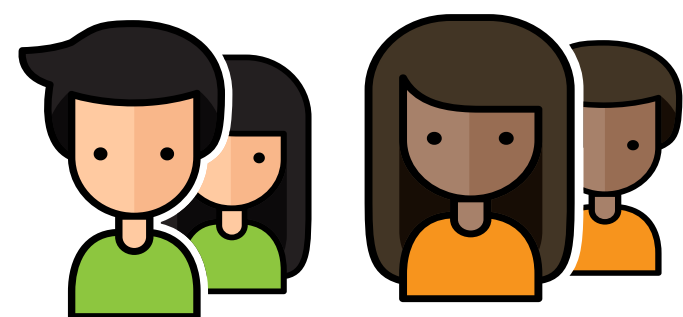
# MAINE TOWNSHIP HIGH SCHOOL DISTRICT 207

## D 2 0 7

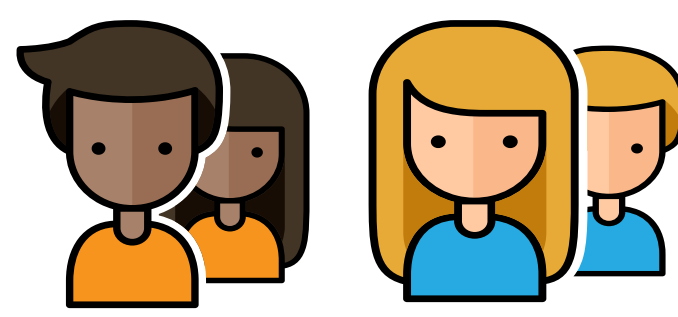
**Our Purpose: Together we educate students to be informed, inquisitive, responsible, creative, and reasoning individuals.**

## D 2 0 7

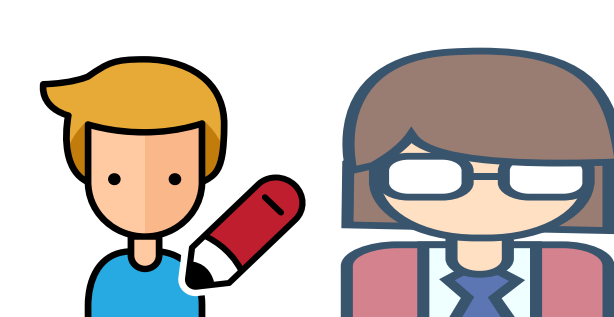
### Join the District that Tech Insider calls, "one of America's 14 most innovative!"



6,370  
Awesome  
Students



42% Student  
Racial/Ethnic  
Diversity



18.1 Students  
to Teacher  
Ratio



Google's 1st k-12  
partner 1:1 with  
Chromebooks



Over 80% of  
Teachers with  
Master's Degree or  
Above



27% Low Income  
Students



ACT/SAT average  
scores consistently  
higher than state  
average



58% of all  
expenditures are  
for Instruction costs



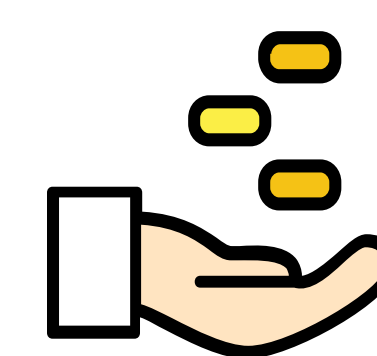
92.2% Teacher  
Retention Rate



Nearly \$20,000  
Operating  
Expenditure per  
Pupil



Over 200 clubs,  
sports and  
activities offered to  
students



Starting Salaries  
(BA/1): \$59,500  
(MA/1): \$64,100



Top Salaries  
(MA/26): \$123,100  
(MA+64/30): \$141,800



Leading US job  
embedded PD,  
teacher-led  
induction &  
coaching program



Excellence in  
Education Blue  
Ribbon Award US  
Dept of Education



Apply online at:

[www.generalasp.com/D207/onlineapp](http://www.generalasp.com/D207/onlineapp)

District Website: [www.maine207.org](http://www.maine207.org)