

Maine East High School
Phase 1 Construction Update
November 2019



- Maine East Priorities - Referendum

1. Expand Dining
2. Create Commons/Collaboration Areas
3. Boys Locker Room
4. Library location
5. Classroom Improvements
 - Furniture, technology, electrical, finishes
6. Isolated Spec Ed needs
 - Sensory, C108 Kitchen, Office, Additional Classroom
7. Toilet Rooms
8. Fitness Center
 - Weight, Cardio, Dance/Yoga, Swim
9. Administration Office
 - APs, meeting spaces, prof dev, Deans
10. CTE – Incubator/Maker spaces
11. Student Services
 - Conference room, commons spaces
12. Locate Foreign Language together
13. Greenhouse for Science



CONCEPT DRAWINGS

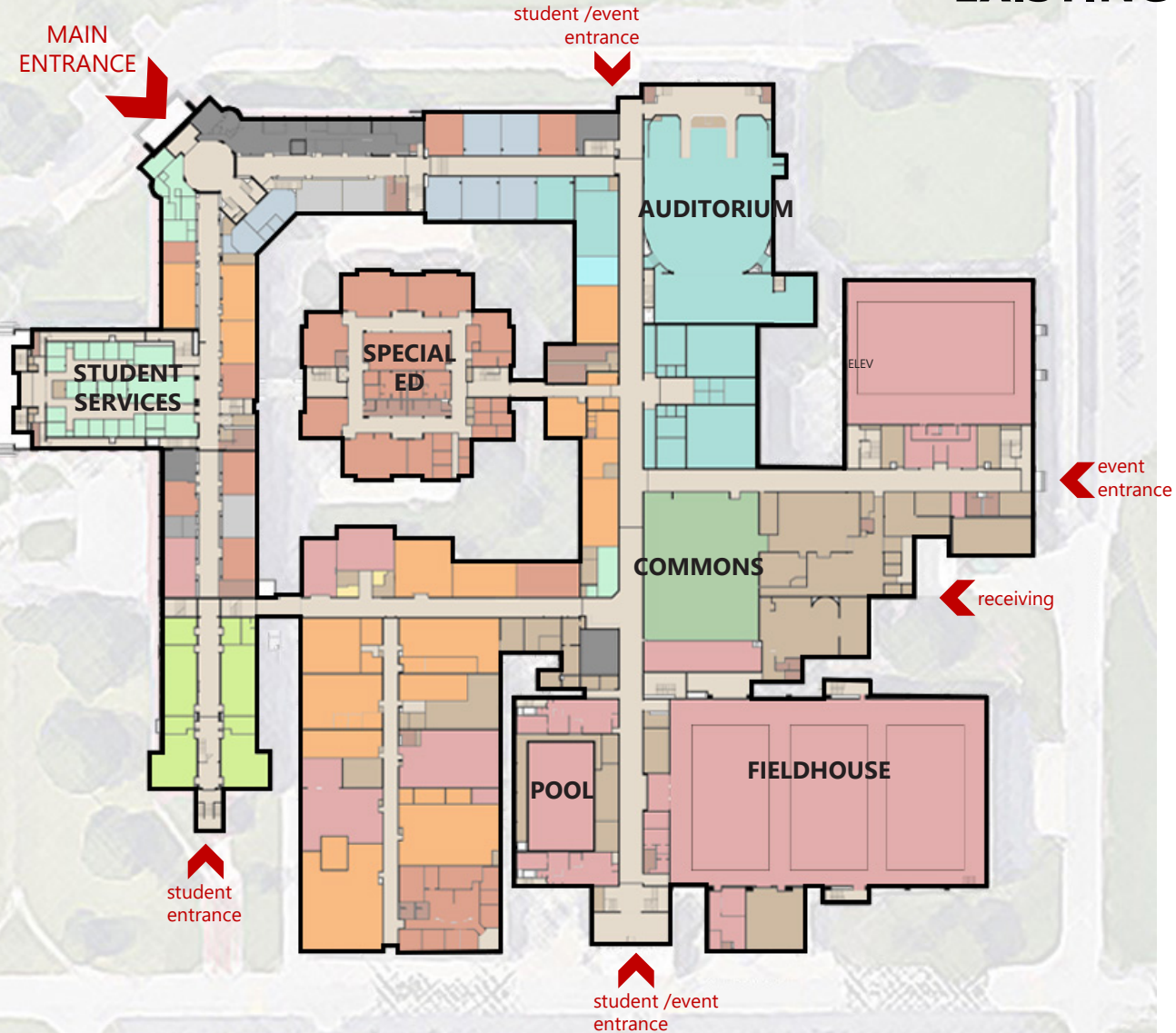
EXISTING FIRST FLOOR

BUILDING SPECIFIC CHALLENGES

Create secured front entrance

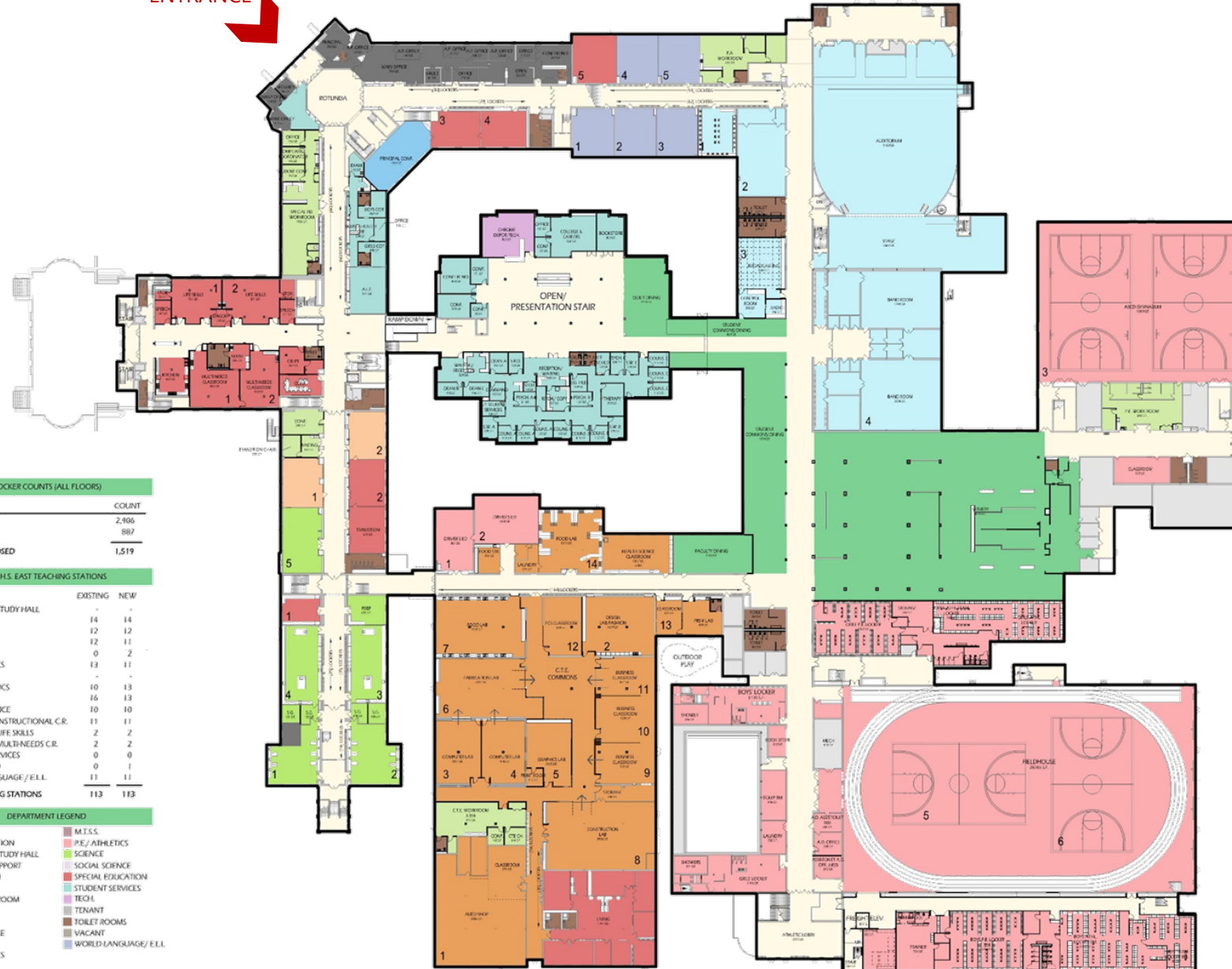
Modernize dated footprint / spaces for active learning styles & program evolution (fine arts/athletics/special education)

Resolve accessibility issues throughout building (multiple additions)



PROPOSED FIRST FLOOR - UPDATED

MAIN
ENTRANCE



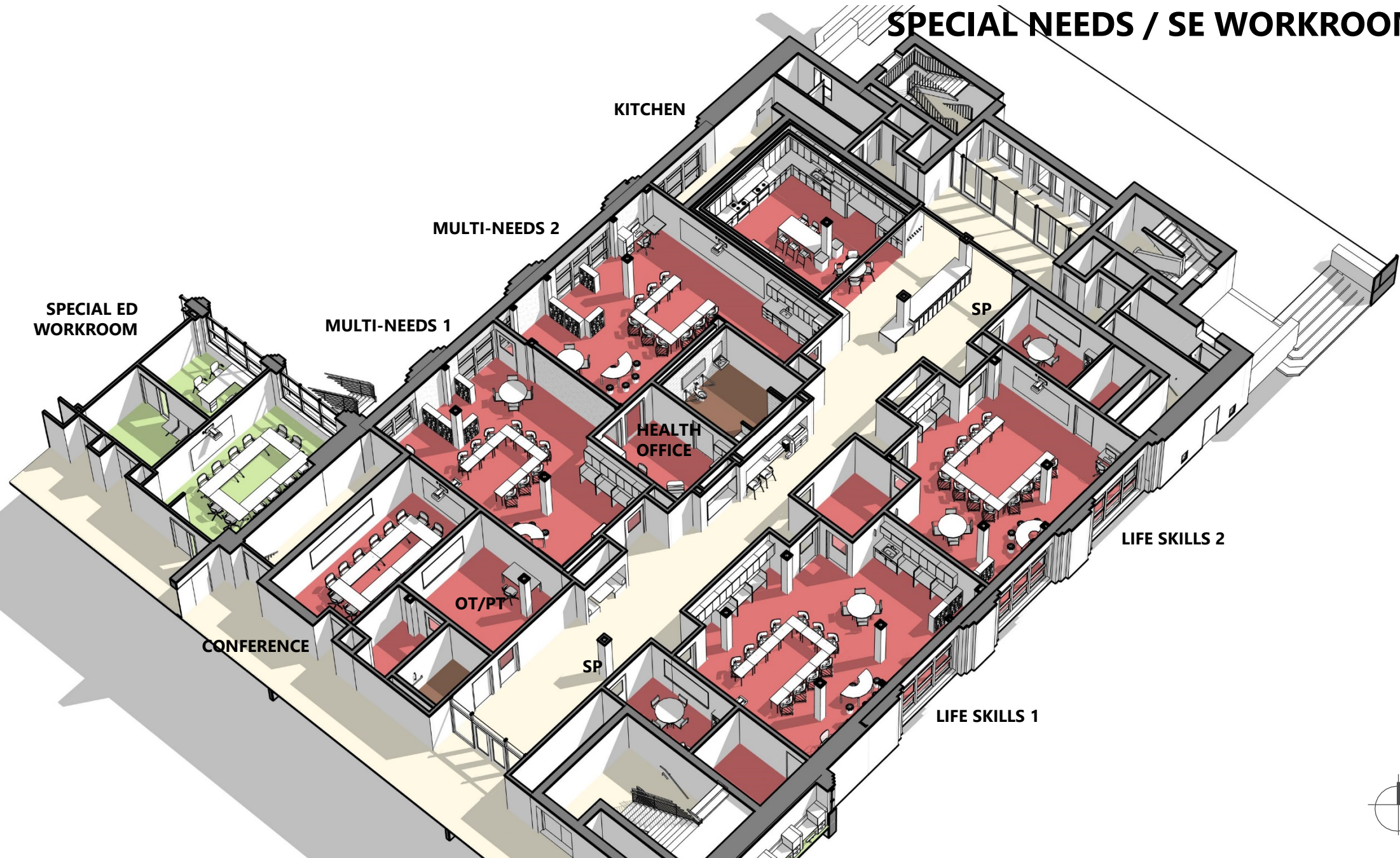
Hallway View



CONCEPT DRAWINGS
SPECIAL NEEDS / SE WORKROOM
May 2020-December 2020



SPECIAL NEEDS / SE WORKROOM



Special Education hallway and kitchen area



CONCEPT DRAWINGS

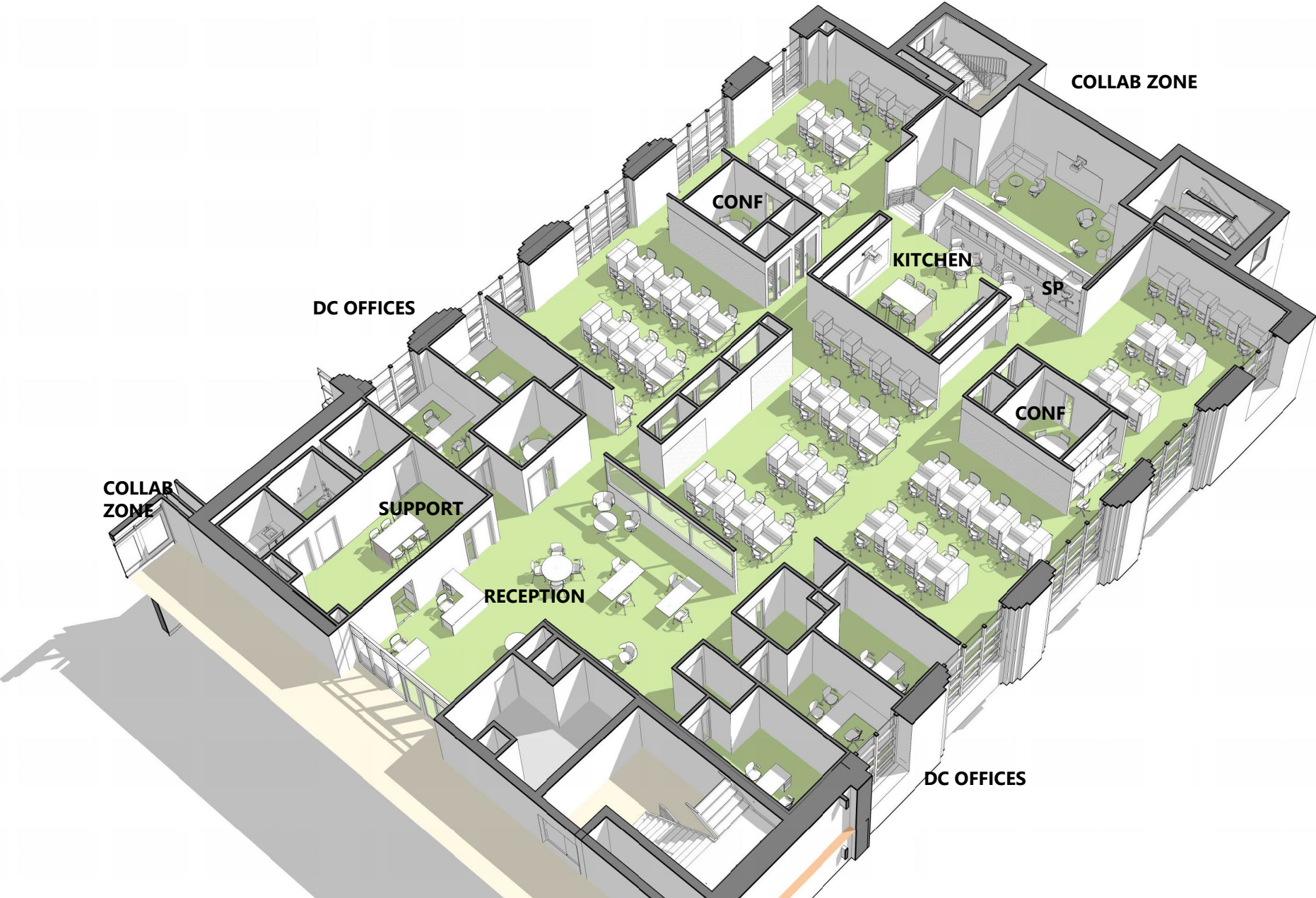
DEPARTMENT WORKROOM

May 2020-December 2020



CONCEPT DRAWINGS

DEPARTMENT WORKROOM



Teacher Student Collaboration Area in workroom



Teacher Workroom Kitchenette

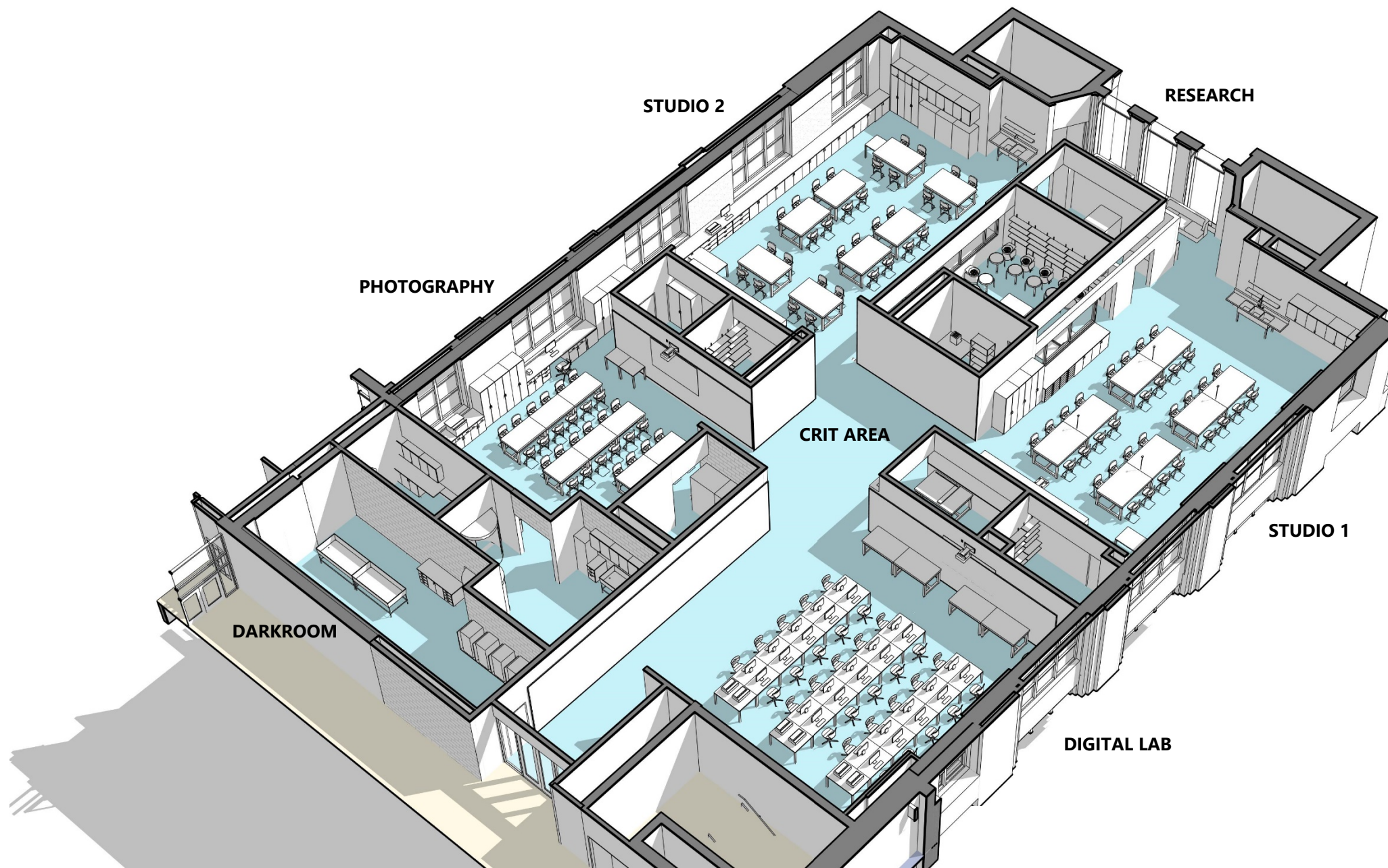


CONCEPT DRAWINGS
VISUAL ARTS SUITE
May 2020-December of 2020



CONCEPT DRAWINGS

VISUAL ARTS SUITE



Visual Arts Studio



Visual Arts Commons



CONCEPT DRAWINGS

BOYS' LOCKERROOM

May 2020 – August 2021

BOYS' P.E. LOCKER ROOM

Small Lockers (12x12x12): 1002

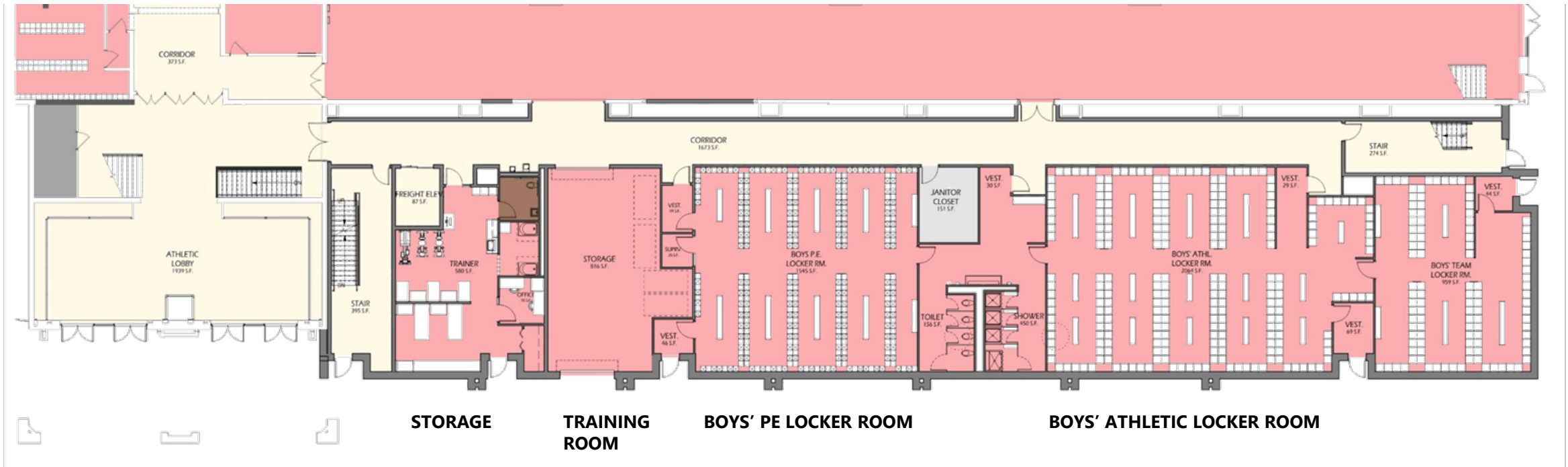
Large Lockers (12x12x72): 159

BOYS' ATHLETICS LOCKER ROOMS

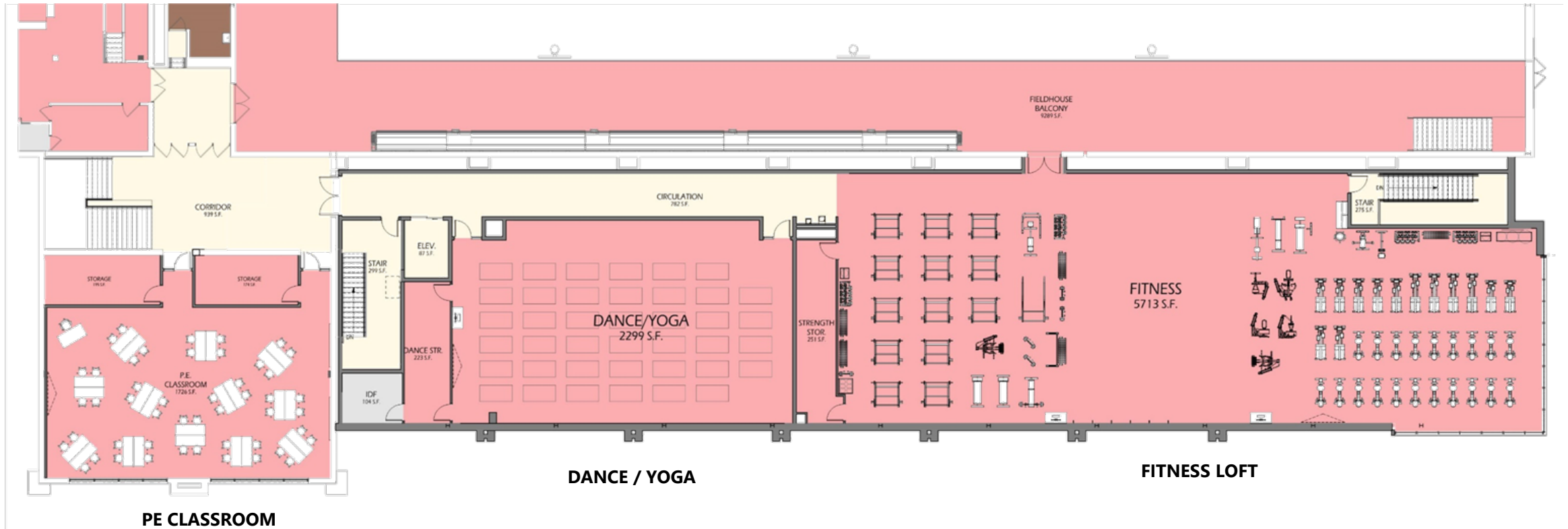
Large Lockers (18x18x60): 241

BOYS' ATHLETICS TEAM LOCKER ROOM

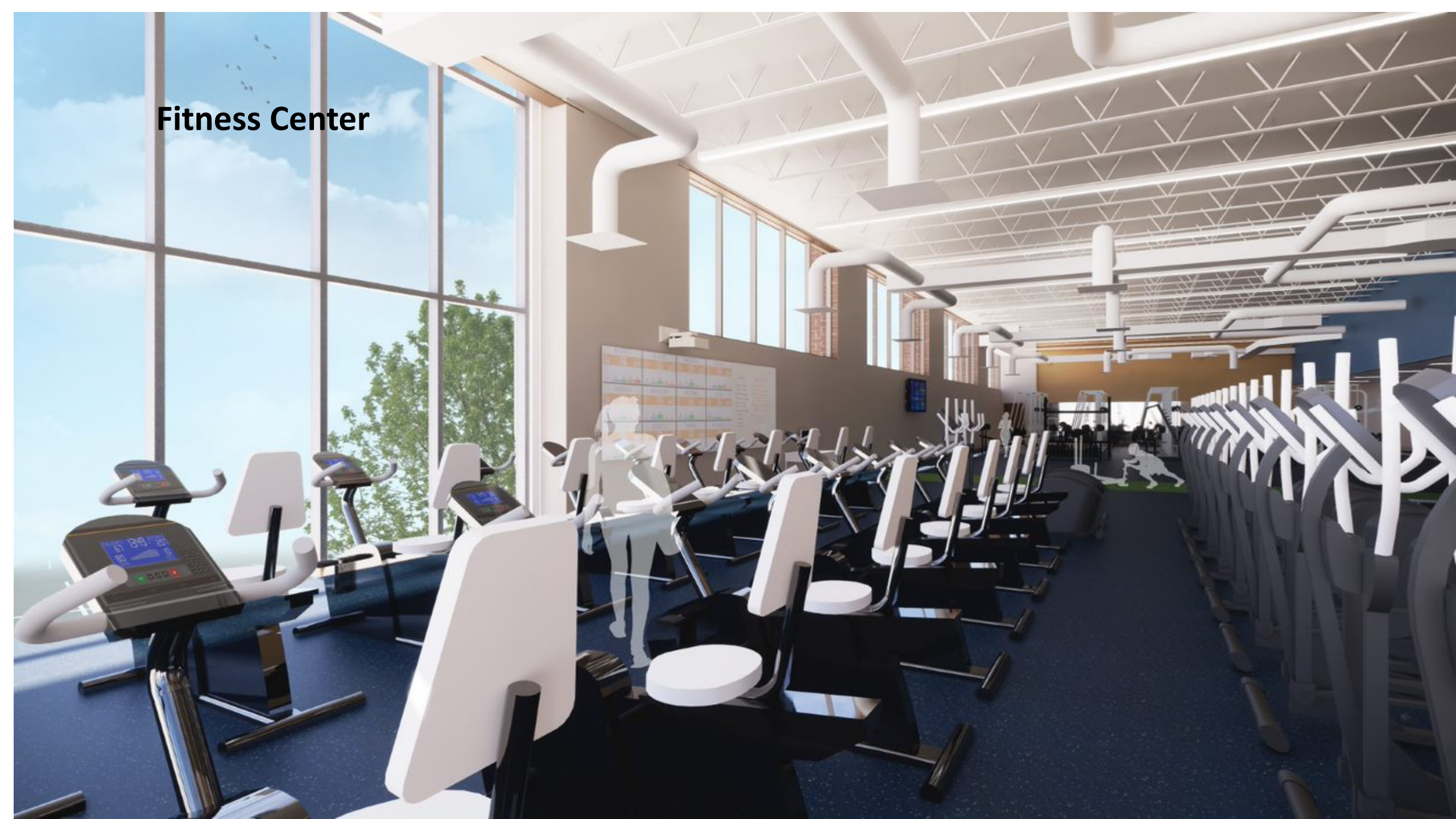
Large Lockers (18x18x60): 108



CONCEPT DRAWINGS
DANCE/YOGA/FITNESS
May 2020-August 2021



Fitness Center



CONCEPT DRAWINGS
VIEW OF FITNESS ADDITION



**NORTH ELEVATION
WEST LINK**



**NORTH ELEVATION
EAST LINK**



**SOUTH ELEVATION
WEST LINK**



**SOUTH ELEVATION
EAST LINK**

