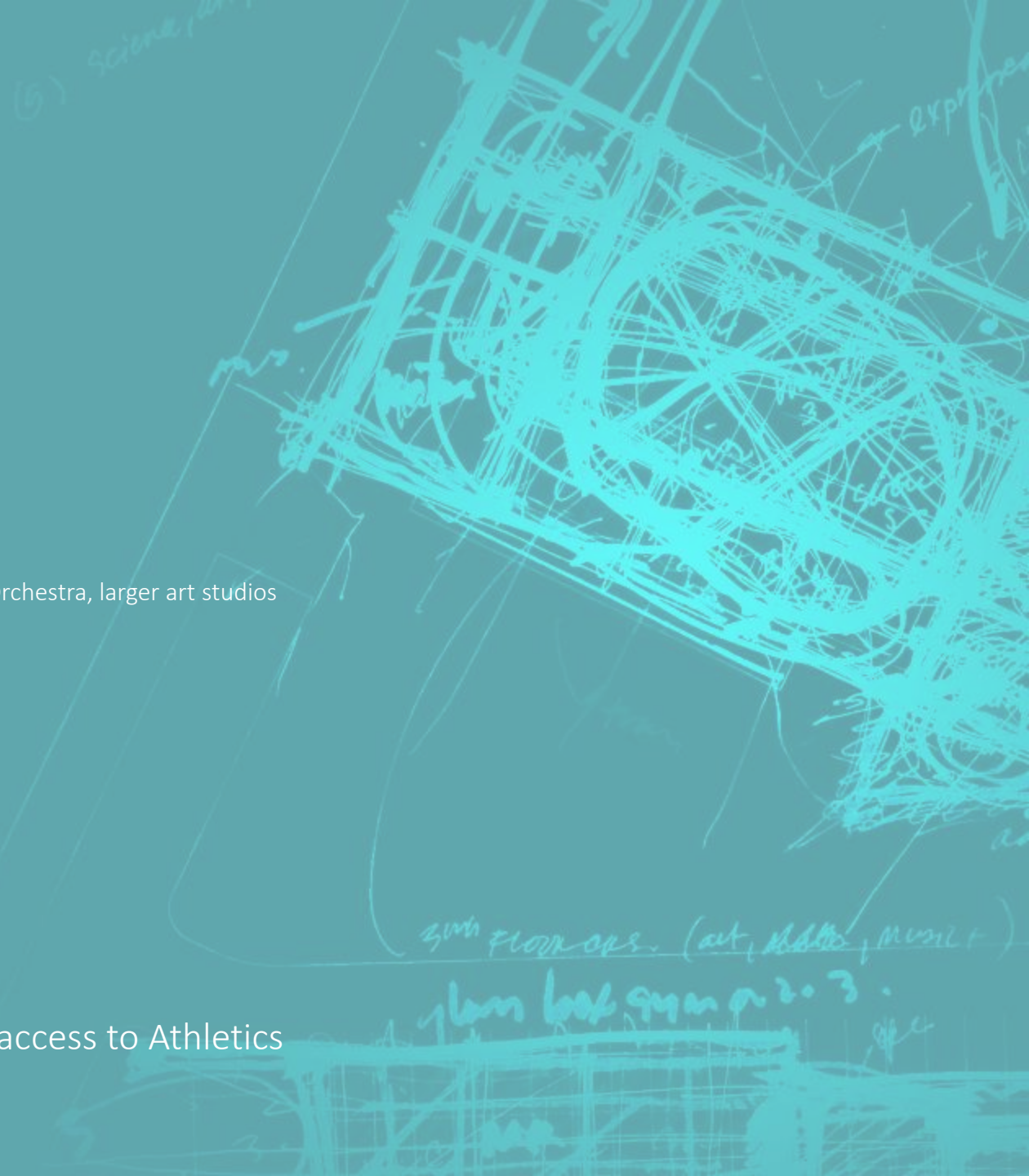


Maine South High School
Phase 1 Construction Update
November 2019



• Maine South Priorities - Referendum

1. Expand Dining
2. Create Commons
3. Main Entry to display school accomplishments
4. Fitness Center
5. Pool renovation and/or additional Contest Gym
6. Classroom Improvements
 - Furniture, technology, electrical, finishes
7. Fine Arts Improvement
 - Practice rooms, Larger Band room, storage and acoustics for Choir & Orchestra, larger art studios
8. CTE Improvements
 - Remake Autos, Geo Building, Incubator/Presentation Rooms
9. Science
 - Upgraded Rooms
10. SPS Student Services
 - Nurse and College/Career Resource Center
11. Special Education Office
12. Combined Departmental Offices
13. Building and Grounds aesthetic upgrades and ADA access to Athletics



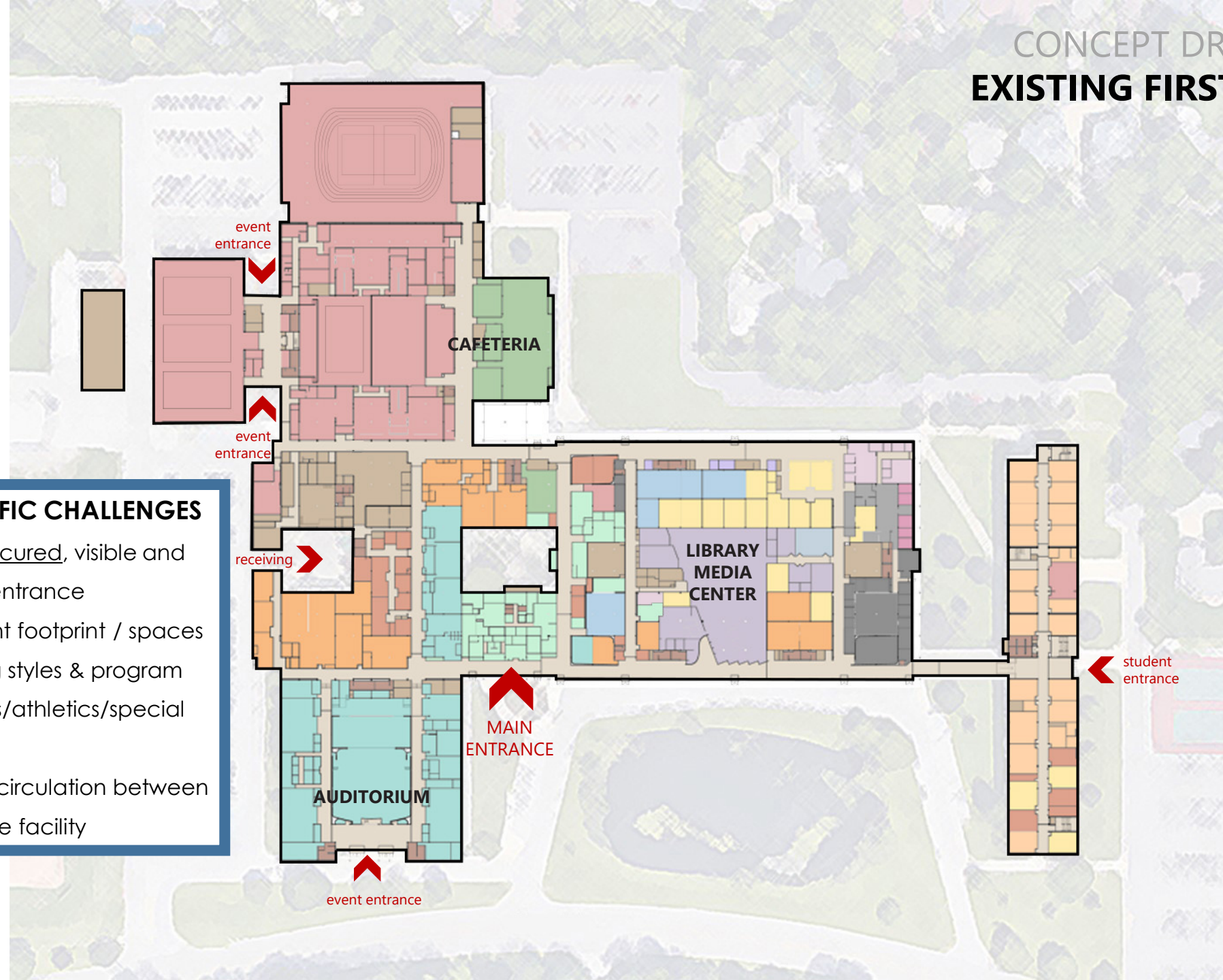
CONCEPT DRAWINGS EXISTING FIRST FLOOR

BUILDING SPECIFIC CHALLENGES

Provide a more secured, visible and welcoming front entrance

Modernize efficient footprint / spaces for active learning styles & program evolution (fine arts/athletics/special education)

Establish secured circulation between remote parts of the facility

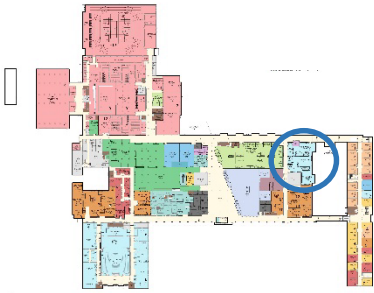


CONCEPT DRAWINGS
PROPOSED FIRST FLOOR - UPDATED

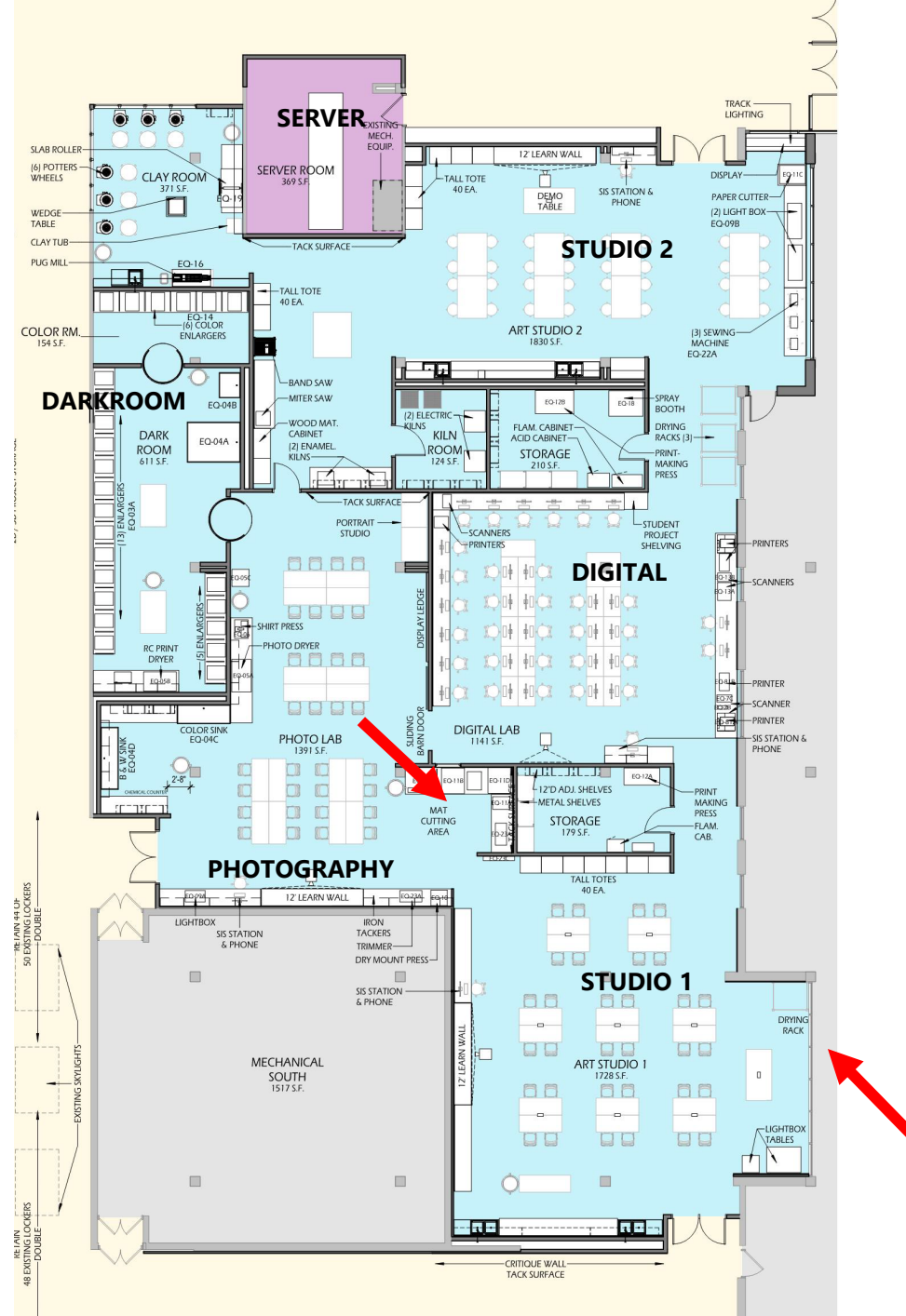




A-Wing Hallway



Key Plan



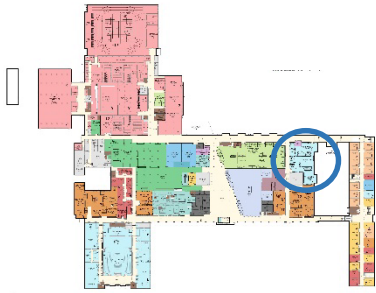
CONCEPT DRAWINGS

VISUAL ARTS SUITE

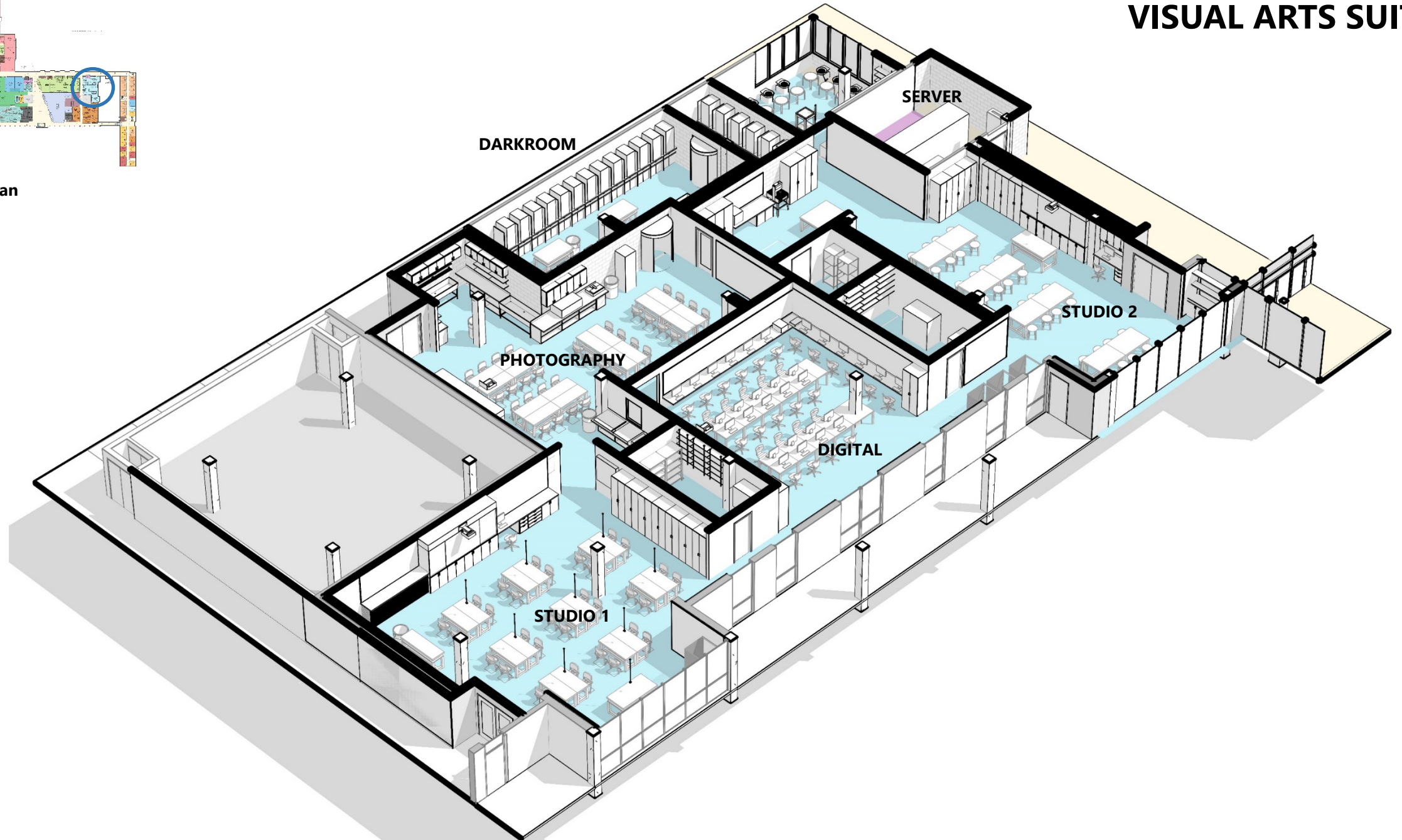
March 2020-August 2020



CONCEPT DRAWINGS VISUAL ARTS SUITE



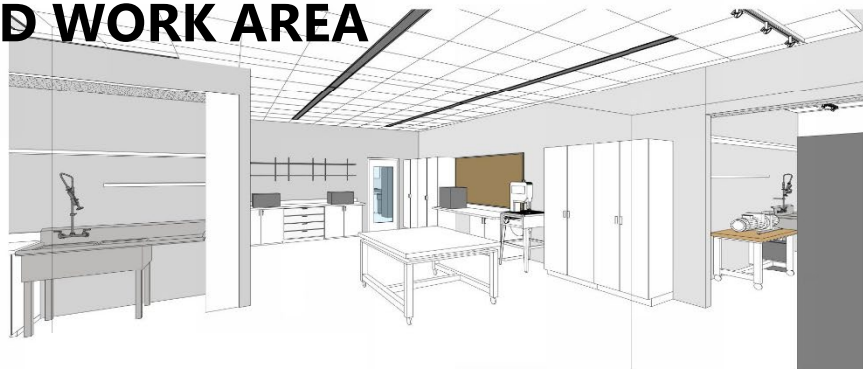
Key Plan



STUDIO 2



SHARED WORK AREA



POTTERY/CERAMICS NICHE



PHOTOGRAPHY



STUDIO 1





Visual Arts Room



Photography Room



Culinary Lab



MTSS – Student tutoring and Support

This architectural rendering depicts a spacious, modern interior for a Student Tutoring and Support (MTSS) center. The room features a high ceiling with a grid of recessed linear LED lights. The walls are primarily white, with a series of colorful rectangular panels (light blue, green, purple, and grey) arranged horizontally along the upper portion of the left wall. A prominent feature is a large, bright red wall section on the right, which frames an opening into another area. The floor is covered in a grey and blue patterned carpet. The furniture includes several rectangular wooden tables with grey chairs, and a large round wooden table with grey chairs in the foreground. Silhouettes of people are placed throughout the space to show how the area would be used: some are standing and talking, others are sitting at tables, and one person is on a phone. In the background, there are glass-walled rooms with purple-tinted glass and a set of double doors.

CONCEPT DRAWINGS

DEPARTMENT WORKROOM

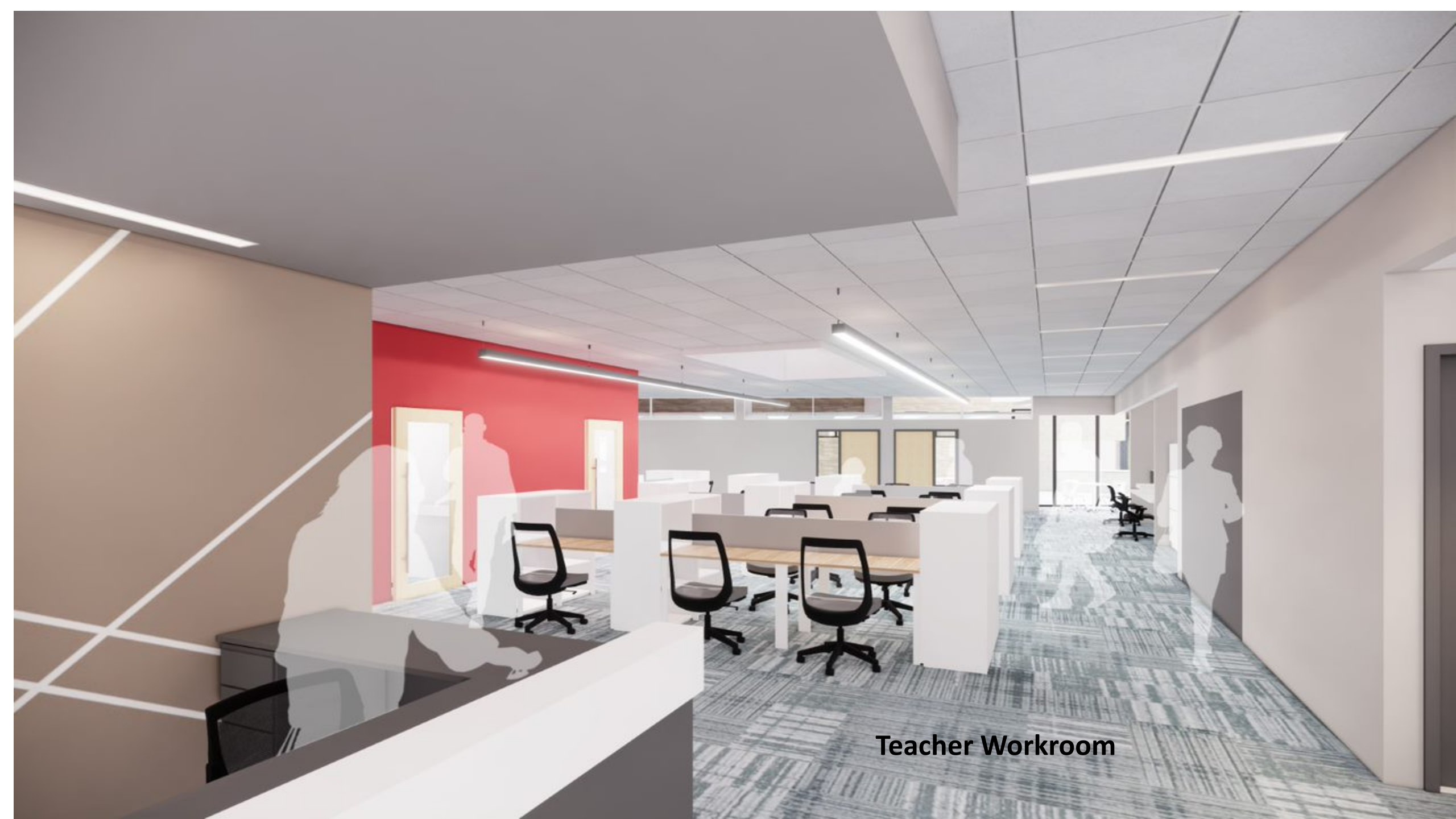


Key Plan



CONCEPT DRAWINGS
DEPARTMENT WORKROOM





Teacher Workroom



Teacher Workroom

VIEW OF PROPOSED MAIN ENTRANCE

